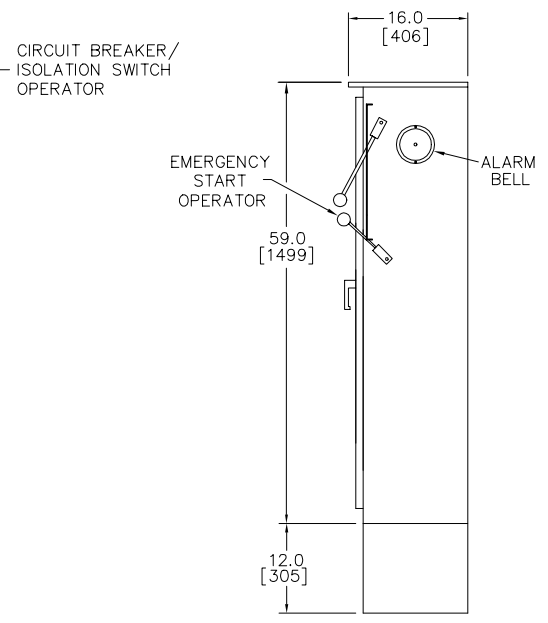
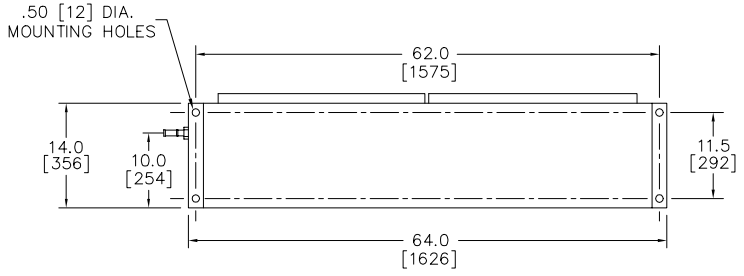


FRONT VIEW



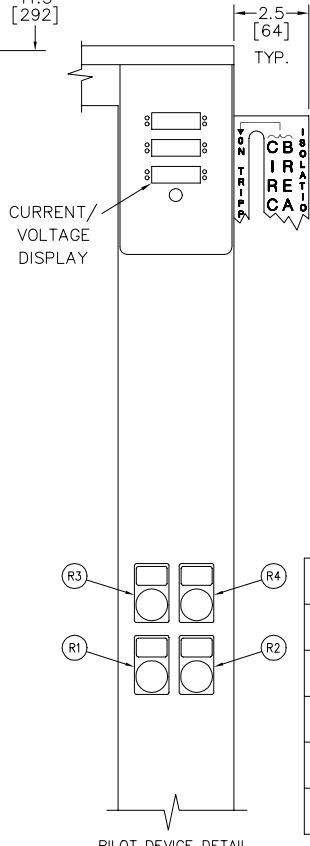
SIDE VIEW



BOTTOM VIEW

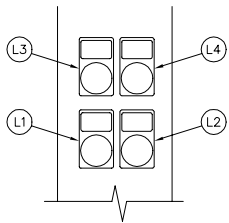
PILOT DEVICE LEGEND
LEFT FLANGE

- L1. SWITCH IN EMERGENCY LIGHT
- L2. PUSH TO TEST BUTTON
- L3. SWITCH IN NORMAL LIGHT
- L4. EMERGENCY ISO SW. OPEN LIGHT

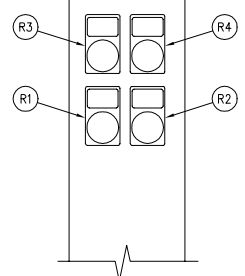


PILOT DEVICE LEGEND
RIGHT FLANGE

- R1. START PUSH BUTTON
- R2. STOP PUSH BUTTON
- R3. POWER ON LIGHT
- R4. PHASE REVERSAL LIGHT



PILOT DEVICE DETAIL
LEFT FLANGE



PILOT DEVICE DETAIL
RIGHT FLANGE

VOLTAGE	HORSEPOWER
200V	75-150 HP.
208V	100-150 HP.
230V	100-200 HP.
380V, 415V	150-300 HP.
460V	200-400 HP.

NOTES: NEMA 2 ENCLOSURE.
ALL DIMENSIONS IN INCHES
AND MILLIMETERS ([])

DRAWN	SR	2-10-98		METRON, INC. DENVER, CO.
CHECK	KH.	2-21-98		
APPD	X.B.	2-21-98		
ENCLOSURE DIMENSIONS MODEL M300 W/TRANSFER SWITCH 64" CABINET ELECTRIC FIRE PUMP CONTROLLER				CD32930B
SCALE				N.T.S. SHEET 1 OF 1